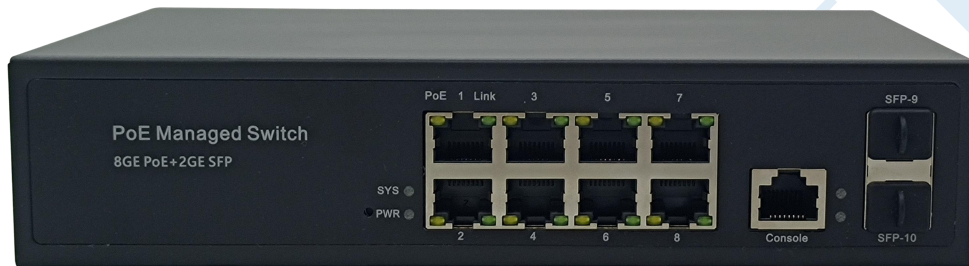


## 2+8 Management Gigabit PoE Switch JHA-MPGS28N



### Managed PoE Switch Hardware Parameters

Fixed Port	8*10/100/1000Base-TX PoE port (data/power) 2*1000M SFP
PoE Port	1-8 port supports PoE
Console Port	1*console port
POE Port	1-8
Reset	1
Network Protocol	IEEE 802.3 IEEE 802.3u 100BASE-TX IEEE 802.3ab1000BASE-T IEEE 802.3x IEEE 802.3z 1000BASE-X IEEE 802.3af/at IEEE 802.3ad  IEEE 802.3q 、 IEEE 802.3q/p  IEEE 802.1w、 IEEE 802.1d 、 IEEE 802.1S STP(Spanning Tree Protocol) RSTP/MSTP( Rapid Spanning Tree Protocol) EPPS ring network protocol EAPS ring network protocol
Port Specification	10/100/1000BaseT (X) Auto
Transmission Mode	Store and Forward(full wirespeed)

Bandwidth	56Gbps
Packet Forwarding	14.44Mpps
MAC Address	8K
Buffer	4.1M
Transmission Distance	10BASE-T : Cat3,4,5 UTP(≤250 meter) 100BASE-TX : Cat5 or later UTP(≤100 meter) 1000BASE-TX : Cat6 or later UTP(≤1000 meter) 1000BASE-SX:62.5μm/50μm MMF(2m~550m) 1000BASE-LX:62.5μm/50μm MM(2m~550m) or 10μm SMF(2m~5000m)
FLASH	16M
RAM	128M
Watt	≤150W
LED Indicator	PWR:Power LED SYS:(System LED) Port:(Orange=PoE LED+Green=Link LED) 9 10:(SFP LED)
Power	Built-in power AC 100~240V 50/60HZ
Operating Temperature/Humidity	-20~+55°C; 5%~90% RH Non coagulation
Storage Temperature/Humidity	-40~+75°C; 5%~95% RH Non coagulation
Product size/Packing size (L*W*H)	210mm*140mm*45mm 270mm*220mm*70mm
N.W/G.W (kg)	1.2kg/1.5kg
Installation	Desktop(optional wall+machine hanger parts)
Lightning protection level	3KV 8/20us; IP30

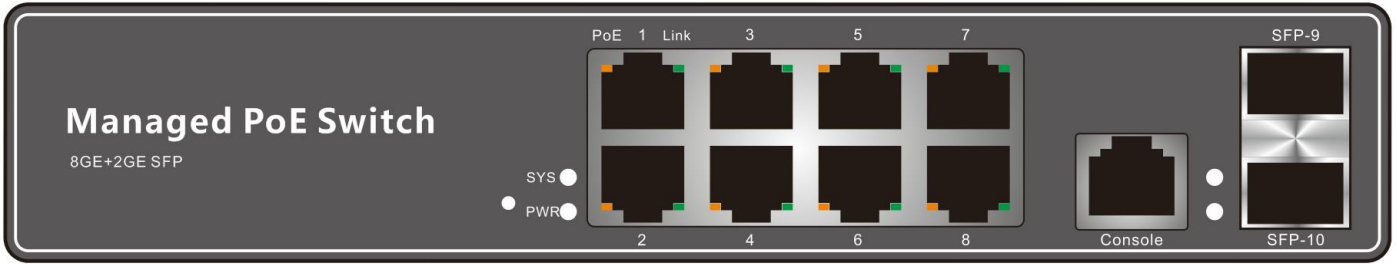
### Management switch WEB software function

Protocol Standard	IEEE 802.3x IEEE 802.3、IEEE 802.3u、IEEE 802.3ab、IEEE 802.3z IEEE 802.3ad IEEE 802.3q、IEEE 802.3q/p IEEE 802.1w、IEEE 802.1d、IEEE 802.1S、IEEE 802.1X
MAC Address	Support 16K MAC addresses;MAC address learning and aging
VLAN	Port-based VLANs Up to 4096 VLAN support Voice VLAN,can configure QoS for voice data 802.1Q VLAN
Spanning Tree	STP(Spanning tree protocol) RSTP(Rapid spanning tree protocol) MSTP(Rapid spanning tree protocol) EPPS(Ring network protocol)

	EAPS(Ring network protocol) 802.1x argumentation agreement
Link Aggregation	Max 8 aggregation groups TRUNK,each supports 8 ports
Port Mirror	Many-to-one port mirroring
Loop Guard	Loop protection function, real-time detection, rapid alarm, accurate positioning,intelligent blocking,automatic recovery
Port Isolation	Support downlink ports isolated from each other and communicate with uplink port
Port Flow Control	Half duplex based back pressure control Full duplex based on PAUSE frame
Line Rate	Support downlink ports isolated from each other and communicate with upstream port
IGMP Snooping	IGMPv1/2/3 and MLDv1/2 GMRP Protocol Registration Multicast address management, multicast VLAN,multicast routing ports,static multicast addresses
DHCP	DHCP Snooping
Storm Suppression	Unknown unicast, multicast,unknown multicast,storm suppression of broadcast type Storm suppression based on bandwidth tuning and storm filtering
Security	User port+ IP Address+ MAC Address ACL based on IP and MAC Security properties of port based MAC address quantities
QOS	802.1p port queue priority algorithm Cos/Tos, QOS sign WRR (Weighted Round Robin), Weighted priority rotation algorithm WRR、SP、WFQ, 3 priority scheduling models
Cable Sequence	Auto-MDIX; auto identification of straight-through cables and crossover cables
Negotiation Mode	Port supports automatic negotiation ( self-negotiation transmission rate and duplex mode)
System Maintenance	Upgrade package upload System log view WEB restore factory configuration
Network Management	WEB NMS CLI management based on Telnet, TFTP, Console SNMP V1/V2/V3; RMON V1/V2 RMON Management

**Front panel sketch map**

8\*10/100/1000M PoE Port+2\*1000M SFP, Rackmount



### Back panel sketch map

The Switch back panel sketch map

